

PIPELINE_{PRODUCTS}

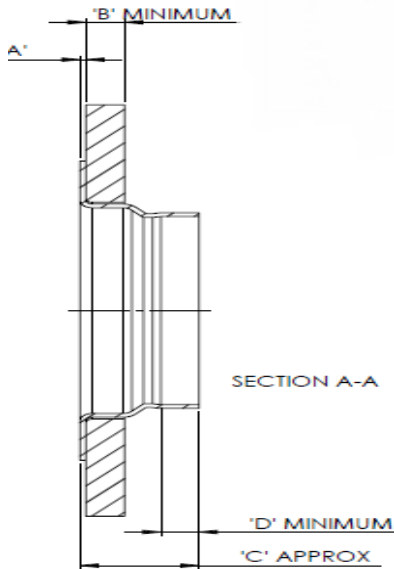


COPAMATE FLANGE ADAPTOR

copamate.

FLANGE ADAPTOR

SOCKET



SIZE	A'	B'				C'	D'
		TABLE D	TABLE E	DIN 16	ANSI 150	APPROX	MINIMUM
20	1.6	10	10	16	23	7.5	7.5
25	1.6	10	10	16	23	7.5	7.5
32	2	10	10	18	23	7.5	7.5
40	2	12	12	18	26	7.5	7.5
50	2	12	12	20	28	7.5	7.5
65	2	12	12	20	30	7.5	7.5
80	2	12	12	20	36	11.1	11.1
100	2	12	13	22	39	11.1	11.1
125	2	14	14	22	43	11.1	11.1
150	2.5	14	17	24	46	14.2	14.2
200	2.5	14	19	26	51	14.2	14.2
250	3	16	22	29	57	18	18
300	3	19	25	32	60	18	18
350	4	22	29	35	60	20	20
400	4	22	32	38	60	20	20
450	5	25	35	42	60	20	20

*Copmate sockets designed and manufactured in accordance with AS3688.

COPPER TUBE-Safe working pressure and testing pressure up to 50c – AS1432 -1996

DN (mm)	Imperial (Inches)	Type A		Type B		Socket
		Psw	Pt	Psw	Pt	
6	1/8"	11990	17980	8710	13070	
8	1/4"	9320	13970	6820	10240	
10	3/8"	8670	13000	7630	11440	
15	1/2"	6330	9490	5590	8380	
20	3/4"	5860	8790	4110	6170	
25	1"	5840	7560	3680	5520	3500
32	1 1/4"	3980	5970	2920	4370	2780
40	1 1/2"	3290	4940	2420	3620	2300
50	2	2440	3670	1800	2700	1710
65	2 1/2	1940	2910	1430	2150	1370
80	3"	2020	3030	1610	2420	1520
100	4"	1500	2260	1200	1800	1200
125	5"	1200	1800	960	1440	960
150	6"	1300	1950	1000	1500	1000
200	8"	910	1370	720	1090	720
225	9"					
250	10"					
300	12					
350						
400						
450						



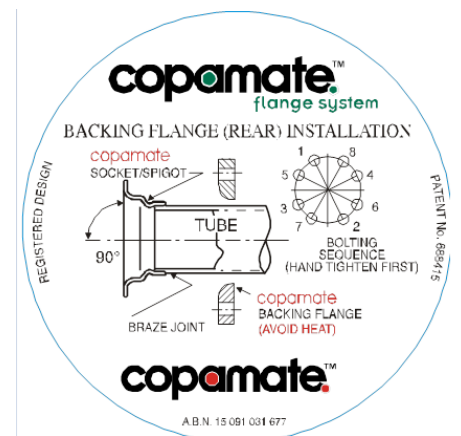
Steel Flange Standards – Rating apply to temperature less than 232°

Standard and Std. No.	Class/Table	Copamate Colour	Temperature (°C)	Working Pressure	Hydrostatic Test Pressure
Australian	Table C		-18 to 120	1200	1800
	Table D	Black	-50 to 232	700	1050
	Table E	Dark Blue		1400	2100
	Table F			2100	3150
	Table H	Claret		3500	5250
British	DIN6		Up to 150	600	900
	DIN10			1000	1500
	DIN16	Light Blue		1600	2400
	DIN25			2500	3750
	DIN40			4000	6000
American	125/150	Grey	-20 to 100	2000	3000
	250/300			5150	7725
	600			10300	15450
Japanese/JIS	10		Up to 120	700	1050

Electrolysis Protection - Electrolysis occurs over time when two dissimilar metals are in contact. Our product has a superior coating system designed for electrolysis protection. No gasket is required between the mild steel flange and copper socket. Our product has greater longevity and time proven quality with inbuilt UV resistance keeping the product like new.

INSTALLATION INSTRUCTIONS

- Unpack with care
- Avoid impact & direct flame to backing flange.
- Avoid stress – cut tube, away from brazed joint before brazing – rear of backing flange away from socket.
- Braze using normal brazing practices – ensure socket is square.
- Allow socket to cool before sliding flange up to it.
- Insert gasket – if required.
- Hand tighten bolts using normal bolting practice to tighten backing flange.
- If coating is damaged repair with Alkyd Enamel.





copamate.

+61 9459 3644

www.copamate.com

sales@copamate.com